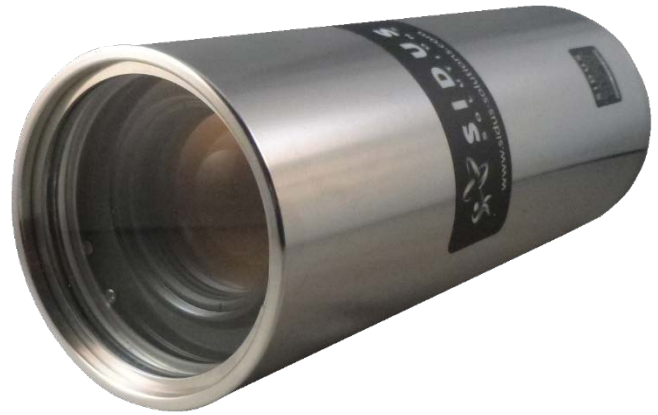




SS465 HD IP Color Camera With Optical and Digital Zoom



The SS465 IP Color Camera with clear optical zoom ensures high resolution images, installation ease and immediate data storage & retrieval.

Full 1080i high definition ensures crisp & pristine images. Power over Ethernet (**POE**) allows for immediate installation, on board memory card slot for recording can save valuable band width and add data handling versatility. This network ready camera encourages diversity of use. Able to withstand extreme environments and temperature ranges this device delivers performance and sustainability.

Product features:

10x optical zoom and 12x digital zoom, auto zoom presets, power over Ethernet, 1080i resolution, video motion detection, gate keeper functionality, impressive temperature operating range. Due to the large size format image - the user has the opportunity to pan and tilt around a zoomed in display.

SIDUS Solutions supplies complete turnkey inspection system equipment, engineering and technical services. Please visit our website or contact SIDUS Sales Team today about other services and product offerings.

Design and Specifications are subject to change without notification

Technical Specifications: SS465 Camera

Design and Specifications are subject to change

Electrical

Operating Voltage	8-20 vDC max 20-24 vAC max 17.4 VA POE IEEE 802.3 Class 3	Sensitivity	1 Lux
Current	17 watts	Resolution	400 TVL
Communication	IP	Shutter time	1/10000 s to ½ s
Connector	Subconn DBH8M	Zoom	10x optical 12x digital Max 120x
		Pan/Tilt Feature	Yes

Environmental

Operating Depth	1,640ft (500m)
Optional	10,000ft (3km) 20,000ft (6km)

Temperature Range

Operating	-40°C to 45°C -40° F to 113°F
-----------	----------------------------------

Camera

Video Format	IP
Image Sensor	Progressive scan CMOS 1/3"
Min Illumination	Color: 2lux at 30 IRE, F1.8 B/W: 0.2 lux at 30 IRE, F1.8

Video

Resolutions HDTV 1080i 1920x1080, HDTV 720p 1280x720
Standard NTSC/PAL for installation

Mechanical

Housing Material	*AL/316SS/Ti
Diameter	3.98" (100.84mm)
Length	10.25" (260.35mm) With connector
Weight	10½ lbs. (4kg)
Port	Acrylic

General

Memory 256 MB Ram, 128 MB Flash
Edge Storage SD/SDHC memory card slot
(Memory card not included)

